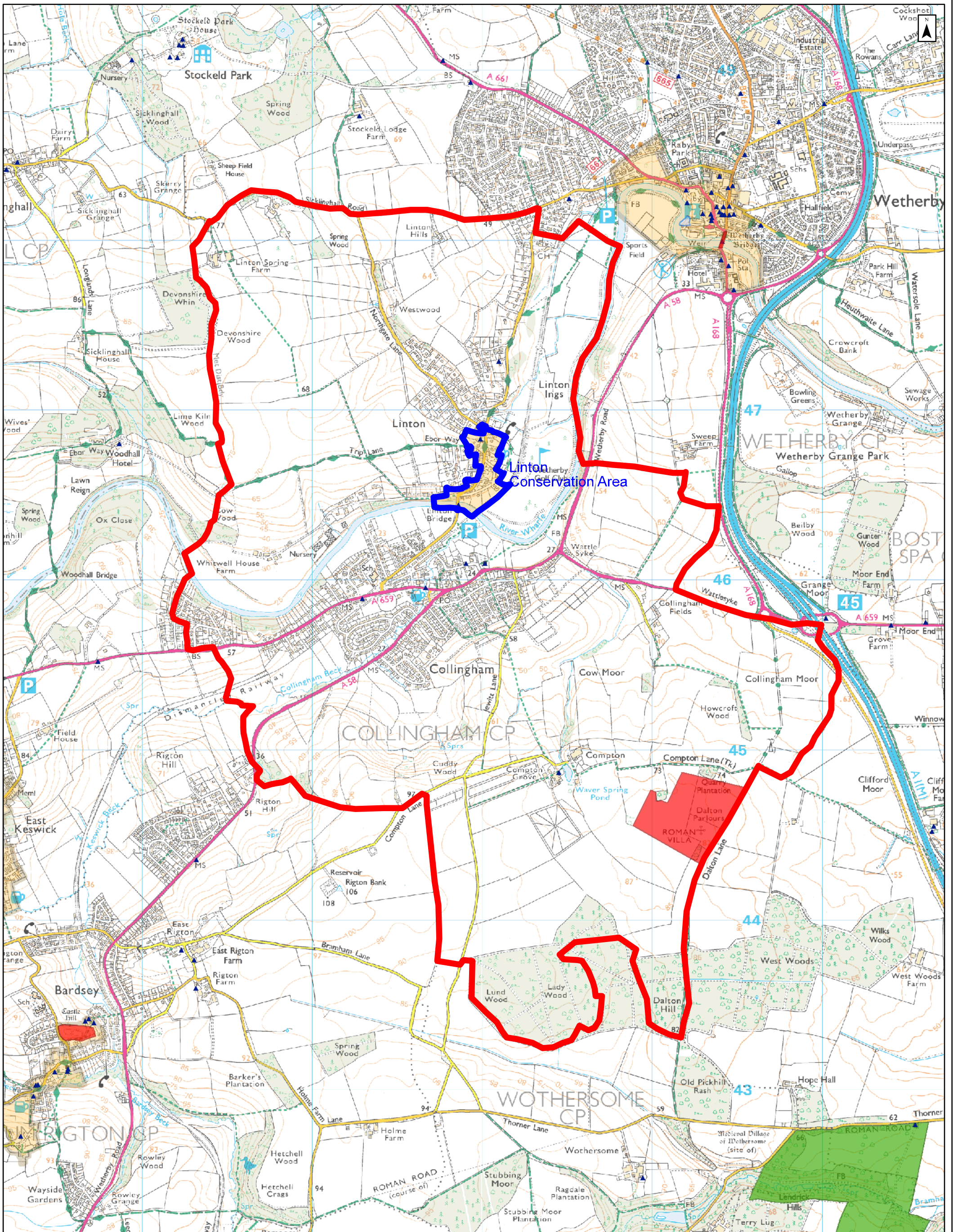


Collingham with Linton Civil Parish Neighbourhood Plan Boundary



Map Scale: 1:20,000

Print Date: 02 June 2014

Author: EHC1Broadwith

Notes:

15:53:40



ENGLISH HERITAGE

1 Waterhouse Square, 138-142 Holborn, EC1N 2ST

Tel: 020 7973 3000 Fax: 020 7973 3001

www.english-heritage.org.uk

This map is based upon Ordnance Survey material with the permission of Ordnance Survey on behalf of the Controller of Her Majesty's Stationary Office. © Crown Copyright. Unauthorised reproduction infringes Crown Copyright and may lead to prosecution or civil proceedings. English Heritage, 100024900, © English Heritage.  
 Historic OS Mapping: © and database right Crown Copyright and Landmark Information Group Ltd (All rights reserved) Licence numbers 000394 and TP0024.  
 SeaZone Hydrospatial data: © British Crown and SeaZone Solutions Limited. All rights reserved. Product Licence no. 102006.006.

This image is indicative and for internal use. It does not necessarily represent the extent of any development proposals and/or heritage assets and may be subject to distortions with measurements scaled from this map not matching measurements between corresponding indicators on the ground. It is not to be taken as a representation of any English Heritage assessment.